

Nights Closure Progress

MORGAN SINDALL

INFRASTRUCTURE



Night Closure Progress: Overview

Summary of the works carried out at night:

- We have been reinstating transverse trenches on the A414 Southern Leg and HMRB. Each of these are carried out over two separate nights and involve the following steps:

Night 1:

- Break and remove the existing concrete and tarmac in the location of the trench crossing
- Excavate down to the same level as the surrounding road
- Prepare the trench for filling with concrete, by drilling and connecting metal bars into the existing road and laying metal mesh
- Backfill with compacted material and place and bolt down road plates over trench
- Make the road plates safe by forming a small ramp up at their edges for reopening of the road.

Night 2:

- Remove the road plates once road has been closed
- Fill the trench with concrete
- Once the concrete has started to cure and go hard replace the road plates on top of the trench

Night Closure Progress: Overview

Summary of the works carried out at night:

- Old street lighting columns around Harlow Mill roundabout were removed.
- Traffic management was rearranged when leaving Harlow Mill roundabout to join the A414 heading south. This gives us more space to carry out widening works to the road in this area.
- Began erecting new road layout signs
- Lowering cables within the southern footpath along the A414
- Started surfacing works on the A414 Edinburgh Way

Night Closure Progress Photos

Monday 22/06/2020
A414 Southern Leg shut

- Preparing the trench for filling with concrete
- Metal mesh placed within the trench to check it was the correct size



Tuesday 23/06/2020
A414 Southern Leg shut

- Trench filled with concrete
- Road plates placed across concrete ready for reopening the road



Night Closure Progress Photos

Wednesday 24/06/2020
A414 Southern Leg shut

- Removing white marking from road which showed existing layout
- Painted new white lines for the new road layout



Thursday 25/06/2020
A414 Southern Leg shut

- Breaking and removing tarmac and concrete to reinstate trench crossing
- Removing old street lighting columns



Night Closure Progress Photos

Friday 26/06/2020
A414 Southern Leg shut

- Mesh placed ready for filling trench with concrete
- Trench filled with concrete



Monday 29/06/2020
Traffic Lights on Harlow Mill roundabout and Edinburgh Way shut

- New road sign erected on the A414
- Working around cables within footpath



Night Closure Progress Photos

Tuesday 30/06/2020

Traffic Lights on Harlow Mill roundabout
and Edinburgh Way shut

- Trench on Harlow Mill Roundabout broken out and mesh placed ready for filling trench with concrete



- Trench on Harlow Mill Roundabout filled with concrete

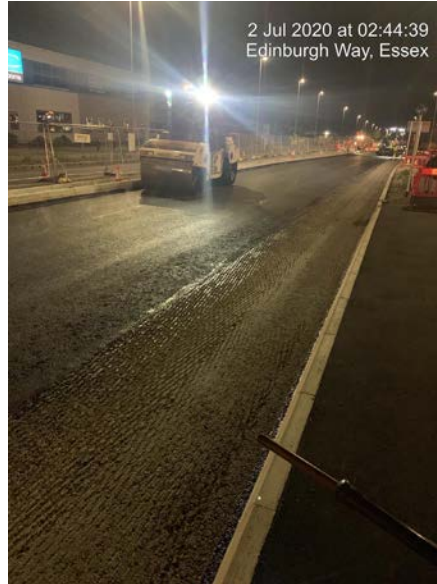


Night Closure Progress Photos

Wednesday 01/07/2020

Traffic Lights on Harlow Mill roundabout
and Edinburgh Way shut

- Compacting newly laid asphalt on Edinburgh way with a roller



- Carrying out asphalting work on Edinburgh way

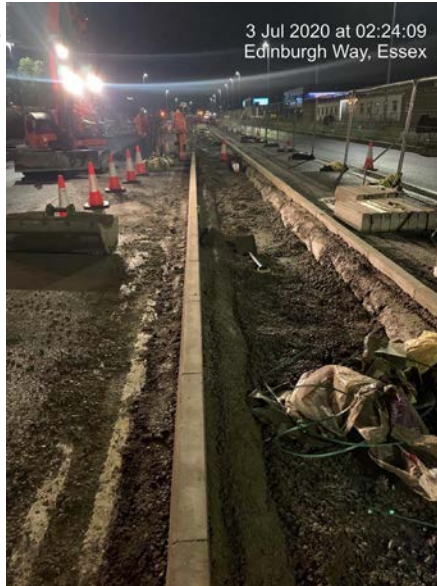


Night Closure Progress Photos

Thursday 02/07/2020

Traffic Lights on Harlow Mill roundabout
and Edinburgh Way shut

- Placing kerbs for the central reserve along Edinburgh Way



- Carrying out asphaltting work on Edinburgh way

